



West End Monthly

West End Community Centre

Volume 10



Hello everyone! I cannot believe its June, this year is just flying. We have had yet another very busy few weeks with lots happening including A Right Royal Do, a new member of staff and a change of time table and opening hours. First things first, we would like to give Janet Heppleston a great big official welcome. Janet joins our team as our in house Functional Skills Learning Champion. Look out for her article introducing herself and telling you about the new groups she will be developing.

On Saturday 11th we held our joint event with the church "A Right Royal Do". As usual you all came up trumps donating food, prizes for the free raffle and volunteering to help. The West End Team are really proud of the support you all provide for the Centre and its activities. Volunteers from the Church also put in a sterling effort, Graham did a brilliant job of decorating the church, and Sarah not only made the most beautiful cake she even stayed behind, mended our Hoover and helped us clean up. Guess what!!! Despite being a very

busy woman she has volunteered to come and show the cooking group how to make and decorate cup cakes. In celebration we are having a day off of healthy eating, Fran says a bit of what you fancy does you good, so that's alright! Thank you Sarah. If you would like to join in come along at 10.30 on Friday 24th of June.

Back to the do. Over 100 people came to celebrate with us. We shared food, listened to the singers who provided us with a medley of songs through the decades finishing with Jerusalem. Thank you singers and Carol for all your hard work.

Sue and Lorraine made sure everyone was fed and watered helped by Joan who should of got the prize for the best dressed person of the day, she looked amazing in her 40s style outfit.

If any of you haven't seen the wonderful art work that has been produced and is now displayed in the centre please visit us for a look over the next few weeks. Richards's portrait of the Queen is

fantastic.

It's impossible to mention everyone that helped to make the event a success but you all know who you are, the West End team would like to say a heart felt thank you to you all.

Keep an eye out for next month's Newsletter when we will have the results of our Consultation and Evaluation day.

I'll finish with an idea Fran and I had. We would like to introduce our new challenge. We want you to be kind to yourselves and perform little act of kindness for others. It doesn't have to be anything big, it could be making someone welcome who looks lonely or left out. It could be giving your seat up to someone on the bus. Smiling and saying hello to someone you walk past every day. Let us know how you get on and how it makes you feel.

Inside this issue:

Introducing Janet	2
Pop up art gallery	2
New groups and timetable changes	3
Stars of the month	3
Birthdays	4
Record Breakers	4

West End Monthly

Introducing Janet

"They are great for making you feel welcome and very friendly and help you to learn new skills. The centre is first class for everything and everyone"

Centre beneficiary at our consultation day

"Coming here is like having a big extended family"

Centre beneficiary at our consultation day

Hello my name is Janet I am the new functional skills tutor here at the West End Centre.

My previous work has been working with people to help them gain employment, which could have been either assisting in updating their CV, how to complete an application form, compiling letters or learning interview skills. My aim is to support people who need help within these areas and also look at new ways of searching for jobs.

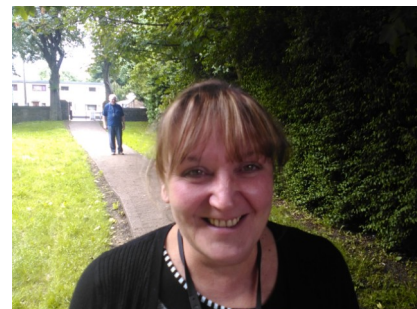
I am running some new groups where I hope to see you.

There is now a new Practical Maths and English group on a Wednesday which is from

1pm – 3pm,
On Thursdays I will be running a History group, this will be based on local areas of interest. We will find out information from DVDs, the internet and actually going out and visiting the areas. While there are already several drop in sessions during the week to enable people to look for work, I will be running a specific group on Friday mornings from 9.30 – 12.00 for those of you that would like some extra support. This will involve looking at individual CV's, what should be included, how to complete an application form along with the additional information section and how to present at

an interview.

I look forward to seeing new and existing learners.



Timetable changes and new groups

"Coming here has helped my transition to Bradford"

Centre beneficiary at our consultation day

So as you can see from Janet's article there are some exciting new groups starting at the centre. Fran will also be taking a group up to the allotment on Thursday afternoons at 1pm. At our consultation Event you asked us for a stress and depression support group, so in the next few weeks we will be starting

one on Thursday mornings, keep your eyes peeled for the start date. Several of our longstanding groups have changed their day or time so pick up a new brochure with your newsletter, call in or phone us for details.

Our new opening hours are
Monday: 9-2

Tuesday: 9-4.30

Wednesday 9-4.30

Thursday 9-4.30

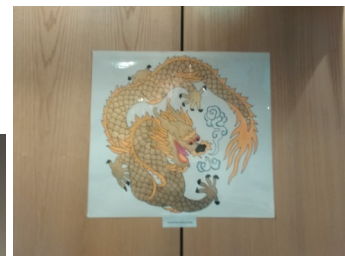
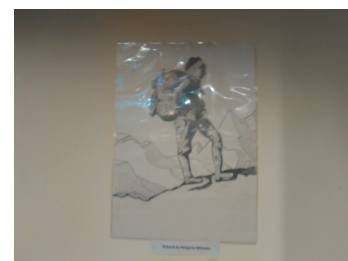
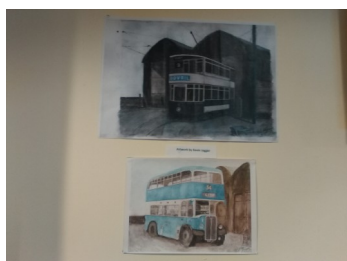
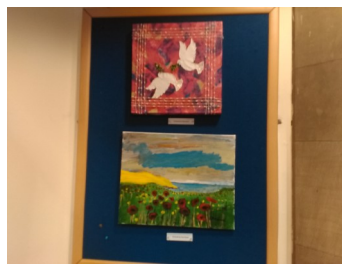
Friday 9-3

As always you don't need to book to come along and you can be assured of a friendly welcome.

Our door is always open!

Pop up art gallery

As part of our Right Royal Do celebration we are displaying some amazing artwork, done by our centre beneficiaries. Feel free to come along and see them for yourself.



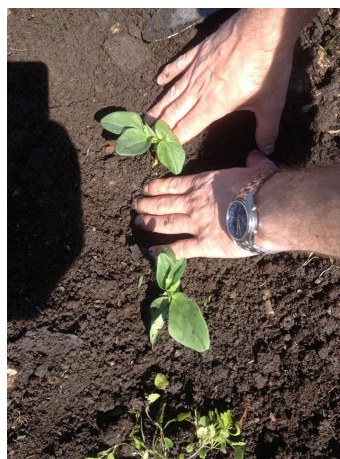
Ready to go...

Well, thanks to the hard work of Dan and our allotment volunteers the plot is now ready to start taking groups up to. We have paths, a poly tunnel, tea making facilities and most importantly a loo!

Now we just need you to join us, whether it is to join in the building, learn about growing plants, fruit and vegetables or just to enjoy the sunshine and chat to

people. You can call in anytime Tuesday, Wednesday or Thursday between 11 and 2. If you are not sure where it is and would like a tour meet Fran at the centre at 1pm on Thursdays. It is a 15 minute walk to the allotment (mainly flat) or you can meet us at the entrance to Sunnybank allotments at 1.20.

Keep your eyes peeled for special events.....



"The place has a friendly feel and it lifts your spirits"

Centre beneficiary at our consultation day

Stars of the Month

Although we think you are all brilliant extra credit this month goes to:

Lorraine Donnelly: For her fantastic presentation along with Stephen 'our journey out of the blues' and for working extremely hard to make our Right Royal do a success.

Stephen Kimber: For his fantastic presentation along with Lorraine on 'our journey out of

the blues' and for always helping out when needed, especially with the lunch club.

Graham Learoyd: For all the extra help he gives us, and being a great support in the walking group.

Mona Kerr and Irene Terry: for long service! Mona and Irene are always willing to help, and have supported the centre since its conception.

Dale Reed: For opening up the allotment and keeping up with the watering while Dan was on holiday.





West End Community
Centre

St Oswalds Church
Christopher Street
Little Horton
Bradford
Phone Fran: 07539 204492
E-mail: fran.westend@outlook.com

Phone Christine: 07853 240809
E-Mail:
christine.westend@yahoo.co

***Www.thewest
endcentre.org***

Many happy returns to the following people
who all celebrate their Birthdays in June:

Nurjannat Kasim

Jean Hirst– the big 90!

Ratty

Taj Bibi

Joey Cheale

Walter May

Yvonne Stubbs

Ann Burns

Sam Dayalji

David Stones

Sajid Shan

Patrick Gaffey

Margaret Whitely

Record breakers!!

We had a record breaking lunch on Wednesday 22nd of June with 39 people coming to join us, The word is spreading about our fantastic cooking! We can always squeeze a little one in though, so if you fancy a tasty, home cooked 2 course meal for just £3.50 come along on a Wednesday morning from 10am to socialise. Lunch is served at 12 noon.

The walking group has also been extremely busy with 14 of us setting off for a sunny stroll this week. The walk sets off at 1.30 on Wednesdays after Lunch Club. Its more of an amble than a ramble and is suitable for all ages and abilities.

